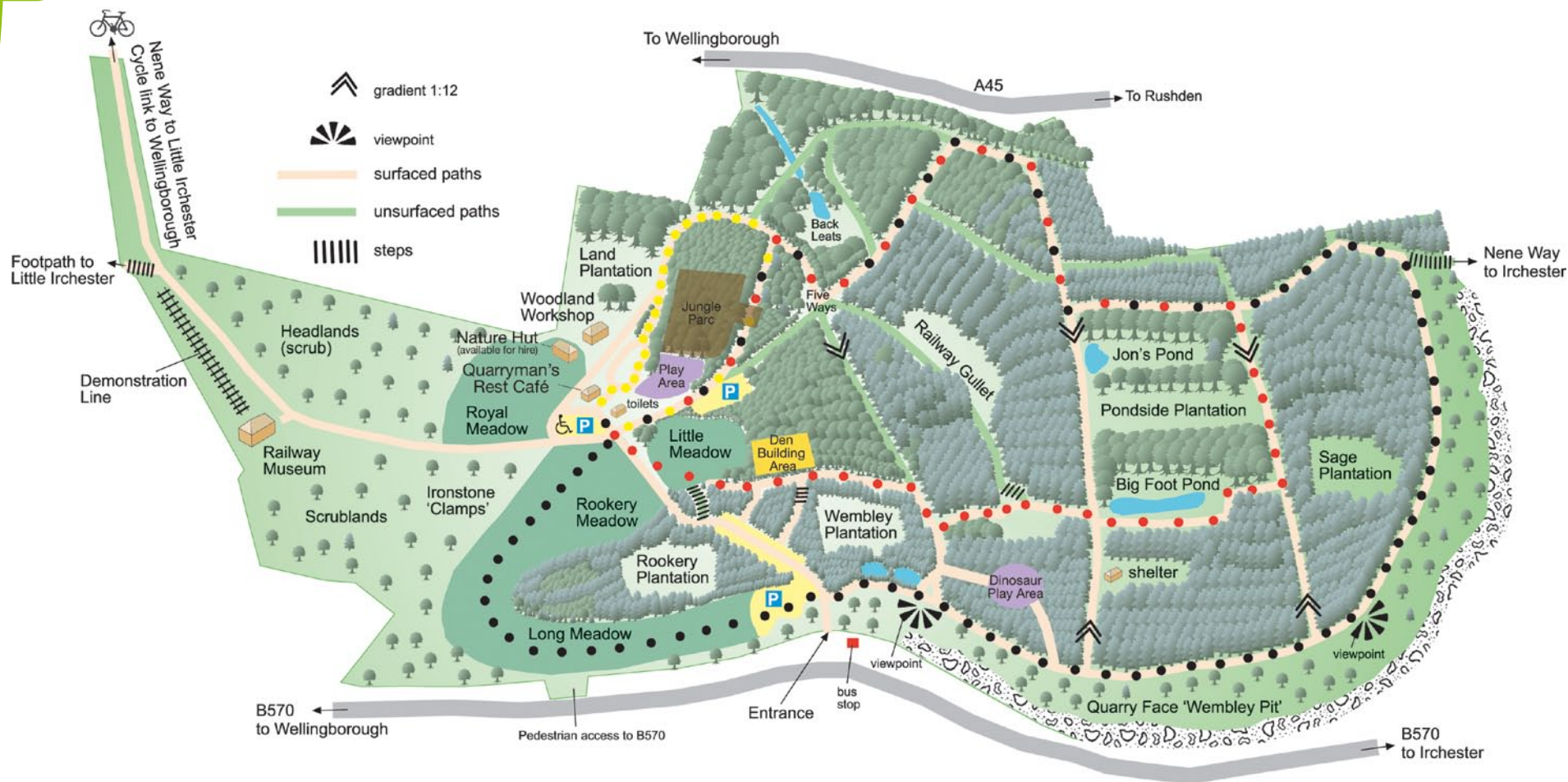


Discover Irchester Country Park



The trails are mostly hard-surfaced with seats and/or resting places every 200 metres (work on-going). There are a number of steeper gradients (marked on the map) but most paths have a gradient of less than 1:12. Cycling is only permitted on hard paths. Cyclists please watch your speed and give way to walkers.

Way marked trails

Woodland Walk
Yellow. 1/2 mile (0.75km). Fully hard-surfaced trail. Minimal gradient. Allow 15 minutes.

Woodpecker Trail
Red. 1 1/3 miles (2.25km). Part hard-surface, part soft track and some short grass. Gradients to 1:12. Allow 50 minutes.

Ironstone Trail
Black. 2 miles (3.25km). Part hard surface, part soft track and large area of short grass. Gradients to 1:12. Allow 1 hour 10 minutes.



Getting involved

Learn new skills and meet new people

All of the parks provide opportunities for you to get involved in volunteer work, learn new skills and meet new people – contact your local park for details.

Meeting /activity rooms for hire

If you are looking for a good value venue in beautiful country park surroundings: We have rooms for hire at Brixworth, Sywell, Barnwell and Irchester Country Parks – suitable for business meetings, craft activities and workshops, community gatherings, illustrated talks, parties, schools and groups.

School, group and corporate activities

Led by experts and tailored to your needs we offer an exciting range of outdoor activities for schools, public and private groups. From pond dipping and nature studies to orienteering and survival skills our activities are suitable for all ages and abilities.

Nature Tots

Join a parents and tots group with a difference – We offer a regular programme of nature activities in the country parks specially designed for toddlers.

Jungle Parc UK high ropes adventure

Swing, zip and glide through the trees at Irchester Country Park using the Jungle Parc UK high ropes adventure courses. X-plorer course for those taller than 1.35m and the Adventurer course for the little ones above 1.05m. Great fun for family and friends. Jungle party packages available. **Visit www.jungleparc.co.uk for more information.**

Country Park events and family fun

For details on a wide range of park events visit **www.northamptonshire.gov.uk/parks**

Birthday parties

Looking for a Birthday Party with a difference? How about trying our Education Ranger led parties with a natural flavour! From bug-hunting & pond-dipping to a totally Wild Woods experience, there is an exciting package to suit all. We provide a room if you want to provide party food yourselves. Or take the strain off and have your celebration nibbles provided by our on site cafes.

Fishing

Barnwell, Sywell and Fermyn Country Parks offer a range of superb day and season ticket course fishing.

Pocket Parks

The Pocket Parks Scheme is an innovative and award winning initiative set up by Northamptonshire County Council to help local communities own and manage green spaces for the benefit of people and wildlife.

To date over 80 have been set up across Northamptonshire. If you are interested in finding your local pocket park, helping out in it, or setting a new one up in your community, please contact our Pocket Parks Officer.

Email: pocketparks@northamptonshire.gov.uk

Cycling

Brixworth country Park and Brampton Valley Way offer superb car free cycling routes. Pitsford Cycles at Brixworth Country Park cater for all your cycling needs from bike hire to sale and repair.

**Visit www.pitsfordcycles.co.uk
Email pitsford_cycles@msn.com or telephone 01604 881777.**

For more information on all the activities above: www.northamptonshire.gov.uk/parks or call 01604 889478

